

TAVISTOCK st *with* ♥



Let's
Chat

Tavistock St Oxley

 1-BED |  1-BATH |  1-CAR

10 fully self-contained SDA approved apartments, located in the vibrant Oxley village, Brisbane.



Private residences

Shared spaces

Smartly designed kitchen with a fresh and bright living space, great for entertaining. Timber flooring, stone benchtops and contemporary fittings. The sliding doors open seamlessly to the private outdoor balcony.

Security parking, intercom entrance, lift access, and loads of storage. Assistive technology ready.

Guide You Home has partnered with the **MS Queensland** team to assist us in finding SDA participants who'd like to live in these new apartments.

MS Queensland can review your SDA and SIL funding, assist with appeal (if necessary) and ensure a smooth transition into your apartment.

Speak with **MS Queensland** ☎ **1800 413 717**
✉ **info@msqld.org.au**

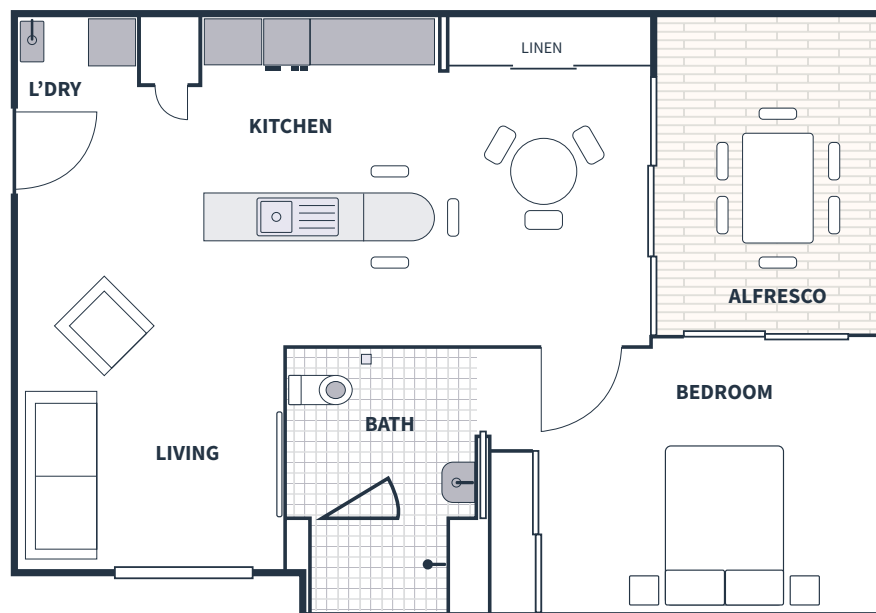


FLOOR PLAN

1-bed apartment, Tavistock St Oxley QLD 4075

Secure a long-term lease

Suitable for **High Physical Support**. Shared Onsite Overnight Assistance (OOA) available.



This is indicative Tavistock Street apartment floor plan only

I'm proud to lead a team of people dedicated to developing **social, affordable** and **disability housing**.

As a **not-for-profit, Community Housing Provider**, we're motivated by our mission to ensure all Australians have a safe, secure and affordable home. We believe this is the best way to support any family.

A handwritten signature in white ink, reading "Charles Northcote".

Charles Northcote CEO
GUIDE YOU HOME & BlueCHP Limited